



Kit Contents

| | Description | Part No | Pcs |
|---|--------------------|----------|-----|
| 1 | Shock absorber | AUV 5T00 | 2 |
| 2 | Helper spring | | 2 |
| 3 | Spring support | 05193-07 | 2 |
| 4 | Main spring | | 2 |
| 5 | Spring retainer | 05907-05 | 2 |
| 6 | Owner's manual | 07446-01 | 1 |
| 7 | Öhlins sticker kit | 10207-01 | 1 |
| 8 | Öhlins emblem kit | 10207-02 | 1 |

👁 Note!

Please note that there can be small differences between your product and the images in these instructions.

👁 Note!

Please note that during storage and transport, especially at high ambient temperature, some of the oil and grease used for assembly may leak and stain the packaging. This will not cause damage to the product, wipe off the excessive oil or grease with a cloth.

👁 Note!

Before you install this product, check the kit contents. If anything is missing, please contact an Öhlins dealer.

⚠ Warning!

Before you install this product, read the Öhlins Owner's manual. This product is an important part of the vehicle and the vehicle stability.

👁 Note!

If the vehicle is equipped with OEM electronic shock absorbers, use Öhlins cancellation kit to avoid error codes. For more information and part number, please visit www.ohlins.com or contact an Öhlins dealer

Shock absorber for Audi R8 2015-

AUV MT00 *front*

Mounting Instructions



MOUNTING INSTRUCTIONS

⚠ Warning!

We strongly recommend to let an Öhlins dealer install this product.

⚠ Warning!

If you work with a lifted vehicle, make sure that it is safely supported to prevent it from tipping over.

👁 Note!

When you work with this product, see the vehicle service manual for vehicle specific procedures and important data.

👁 Note!

Before you install this product clean the vehicle.

1

Raise the vehicle and put it on jack stands.

2

Remove the wheels.

3

Loosen the bolt for the lower shock attachments.

👁 Note!

Support the wheel hubs in an appropriate way on each side of the vehicle so that the brake hoses can not be damaged.

4

Loosen the upper attachments. Remove the original shock absorbers from the car.

5

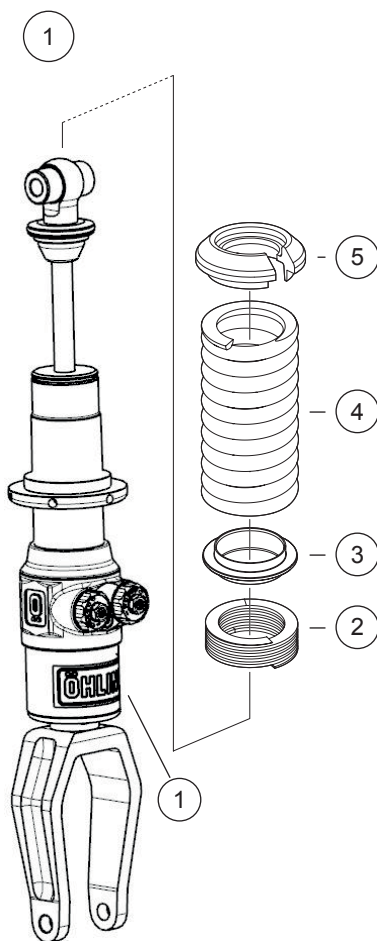
Install the helper spring, spring support, main spring and spring retainer according to fig. 1. Some force to compress the helper spring may be needed during this operation.

6

Install the Öhlins shock absorber to the vehicle.

7

Fasten the upper attachments.



MOUNTING INSTRUCTIONS

8

Fasten the lower attachments.

Note!

Make sure that all bolts are tightened to the correct torque and that nothing fouls or restricts movement of the strut when it is being fully compressed or extended. Test this over the whole steering range from lock to lock. Some of the original bolts need to be replaced when removed. See the service manual for your vehicle or contact an Öhlins dealer.

9

Make sure that all removed parts are reinstalled in the same way as they were before the installation of the Öhlins shock absorber.

10

Reinstall the wheel.

ADJUSTMENTS

⚠ Warning!

Before you ride/drive, always make sure that the setup is according to the recommended setup data. Read about adjustments and setting up in the Öhlins Owner's Manual before you make any adjustments. Contact an Öhlins dealer if you have any questions about setting up.

SETUP DATA

| | Street | Track |
|---------------------|-----------|-----------|
| Compression damping | 15 clicks | 10 clicks |
| Rebound damping | 15 clicks | 10 clicks |

Recommended Springs

Main Spring

| Length | Rate | Öhlins# |
|--------|----------|----------|
| 140 mm | 140 N/mm | 48140-25 |

Helper spring

| Length | Rate | Öhlins# |
|--------|----------|----------|
| 73 mm | 7.5 N/mm | 05173-12 |

Recommended installed spring package length

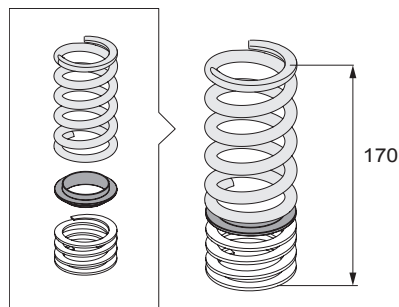
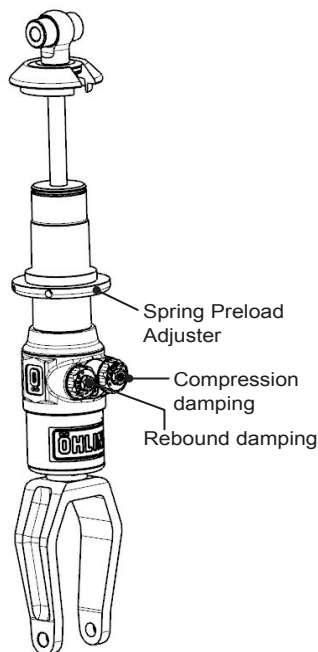
170 mm

Measure from upper edge of helper spring to lower part of main spring. Adjust the installed spring package length by turning the spring preload adjuster until desired ride height is achieved.

Depending on car model and equipment, the ride height at the recommended installed spring package length may vary.

⚠ Warning!

The adjustment range of the installed spring package length is 165 mm-210 mm. Never adjust the spring preload adjuster so that the installed spring package length is shorter than 165 mm or longer than 210 mm.



Öhlins products are subject to continuous improvement and development, therefore, although these instructions include the most up-to-date information available at the time of printing, minor updates may occur.

To find the latest information contact an Öhlins distributor. Please contact Öhlins if you have any questions regarding the contents in this document.

Part no. MI_AUV MT00_0
Issued 2019-06-13

© Öhlins Racing AB. All rights reserved. Any reprinting or unauthorized use without the written permission of Öhlins Racing AB is prohibited.

Öhlins Racing AB
Box 722
S-194 27 Upplands Väsby, Sweden
Phone +46 8 590 025 00
fax +46 8 590 025 80



www.ohlins.com



Kit Contents

| | Description | Part No | Pcs |
|---|-----------------|----------|-----|
| 1 | Shock absorber | AUV 6T00 | 2 |
| 2 | Helper spring | | 2 |
| 3 | Spring support | 05193-07 | 2 |
| 4 | Main spring | | 2 |
| 5 | Spring retainer | 05907-05 | 2 |

Note!

Please note that there can be small differences between your product and the images in these instructions.

Note!

Please note that during storage and transport, especially at high ambient temperature, some of the oil and grease used for assembly may leak and stain the packaging. This will not cause damage to the product, wipe off the excessive oil or grease with a cloth.

Note!

Before you install this product, check the kit contents. If anything is missing, please contact an Öhlins dealer.

Warning!

Before you install this product, read the Öhlins Owner's manual. This product is an important part of the vehicle and the vehicle stability.

Note!

If the vehicle is equipped with OEM electronic shock absorbers, use Öhlins cancellation kit to avoid error codes. For more information and part number, please visit www.ohlins.com or contact an Öhlins dealer.

Shock absorber for Audi R8 2015-

AUV MT00 rear

Mounting Instructions

MOUNTING INSTRUCTIONS

⚠ Warning!

We strongly recommend to let an Öhlins dealer install this product.

⚠ Warning!

If you work with a lifted vehicle, make sure that it is safely supported to prevent it from tipping over.

👁 Note!

When you work with this product, see the vehicle service manual for vehicle specific procedures and important data.

👁 Note!

Before you install this product clean the vehicle.

1

Raise the vehicle and put it on jack stands.

2

Remove the wheels.

3

Loosen the bolt for the lower shock attachments.

👁 Note!

Support the wheel hubs in an appropriate way on each side of the vehicle so that the brake hoses can not be damaged.

4

Loosen the upper attachments. Remove the original shock absorbers from the car.

5

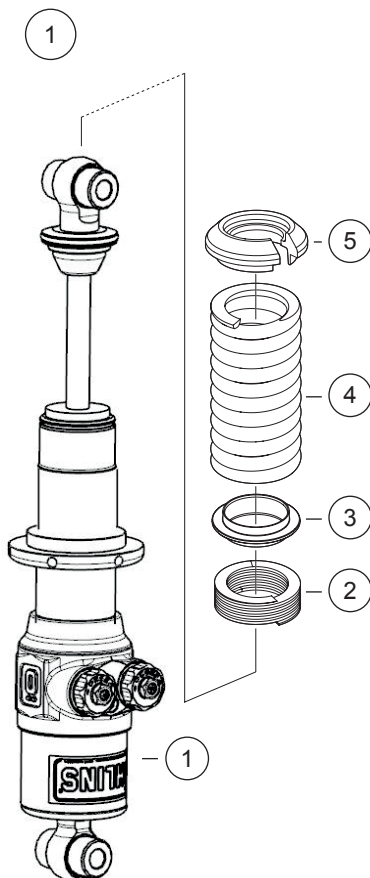
Install the helper spring, spring support, main spring and spring retainer according to fig. 1. Some force to compress the helper spring may be needed during this operation.

6

Install the Öhlins shock absorber to the vehicle.

7

Fasten the upper attachments.



MOUNTING INSTRUCTIONS

8

Fasten the lower attachments.

Note!

Make sure that all bolts are tightened to the correct torque and that nothing fouls or restricts movement of the strut when it is being fully compressed or extended. Test this over the whole steering range from lock to lock. Some of the original bolts need to be replaced when removed. See the service manual for your vehicle or contact an Öhlins dealer.

9

Make sure that all removed parts are reinstalled in the same way as they were before the installation of the Öhlins shock absorber.

10

Reinstall the wheel.

ADJUSTMENTS

⚠ Warning!

Before you ride/drive, always make sure that the setup is according to the recommended setup data. Read about adjustments and setting up in the Öhlins Owner's Manual before you make any adjustments. Contact an Öhlins dealer if you have any questions about setting up.

SETUP DATA

| | Street | Track |
|---------------------|-----------|-----------|
| Compression damping | 12 clicks | 10 clicks |
| Rebound damping | 15 clicks | 10 clicks |

Recommended Springs

Main Spring

| Length | Rate | Öhlins# |
|--------|----------|----------|
| 140 mm | 140 N/mm | 48140-25 |

Helper spring

| Length | Rate | Öhlins# |
|--------|----------|----------|
| 73 mm | 7.5 N/mm | 05173-12 |

Recommended installed spring package length

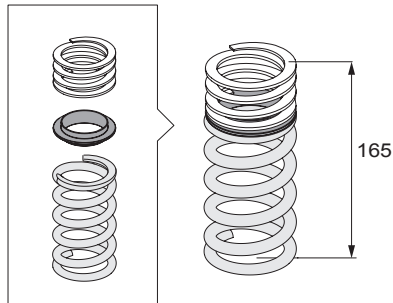
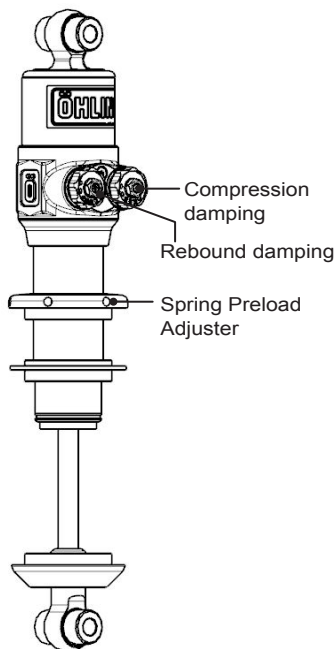
165 mm

Measure from upper edge of helper spring to lower part of main spring. Adjust the installed spring package length by turning the spring preload adjuster until desired ride height is achieved.

Depending on car model and equipment, the ride height at the recommended installed spring package length may vary.

⚠ Warning!

The adjustment range of the installed spring package length is between 165 mm-210 mm. Never adjust the spring preload adjuster so that the installed spring package length is shorter than 165 mm or longer than 210 mm.



Öhlins products are subject to continuous improvement and development, therefore, although these instructions include the most up-to-date information available at the time of printing, minor updates may occur.

To find the latest information contact an Öhlins distributor. Please contact Öhlins if you have any questions regarding the contents in this document.

Part no. MI_AUV MT00_0
Issued 2019-06-13

© Öhlins Racing AB. All rights reserved. Any reprinting or unauthorized use without the written permission of Öhlins Racing AB is prohibited.

Öhlins Racing AB
Box 722
S-194 27 Upplands Väsby, Sweden
Phone +46 8 590 025 00
fax +46 8 590 025 80



www.ohlins.com